



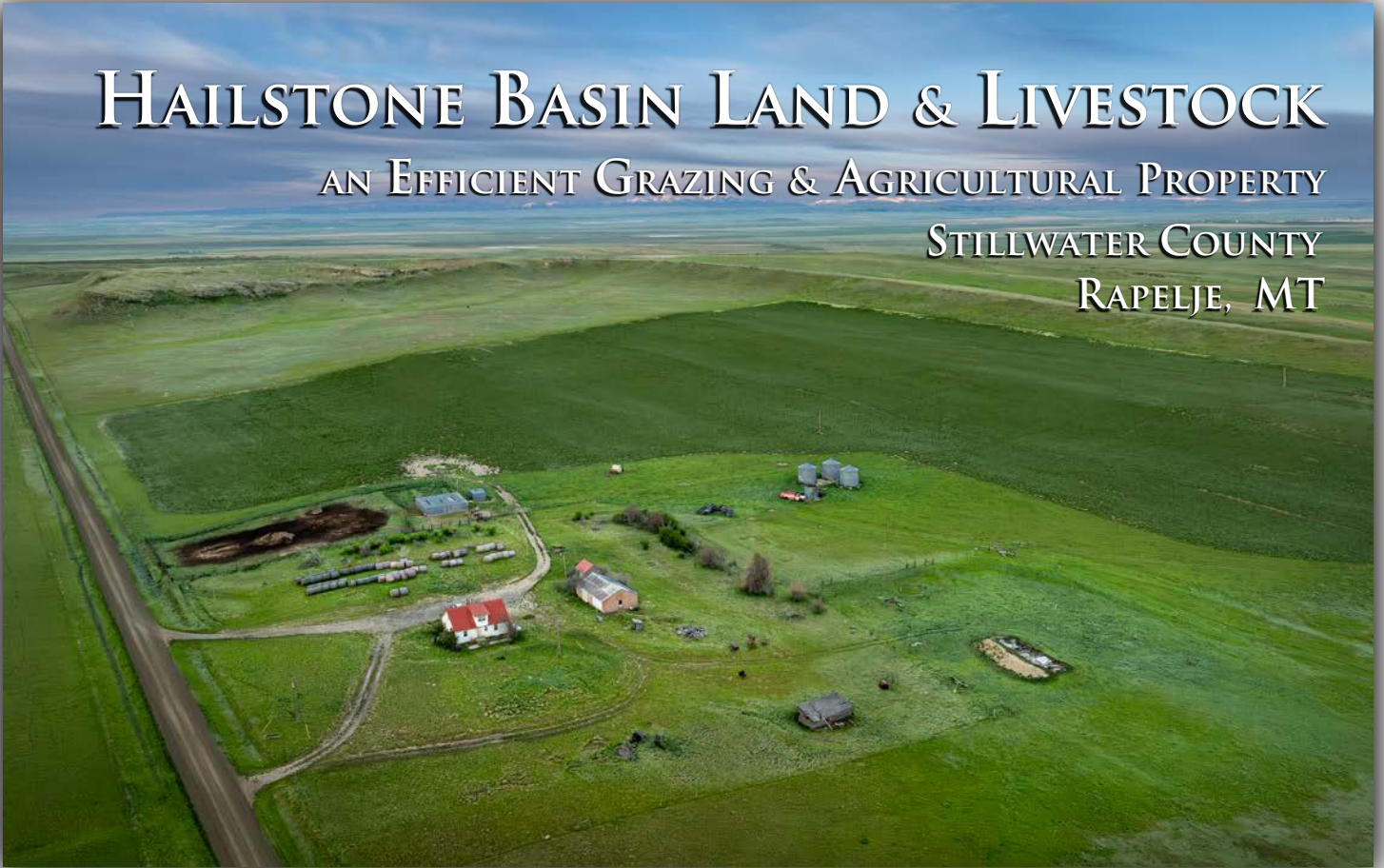
MONTANA-WYOMING WEST  
RANCH BROKERAGE

# MONTANA-WYOMING WEST RANCH BROKERAGE

## HAILSTONE BASIN LAND & LIVESTOCK

AN EFFICIENT GRAZING & AGRICULTURAL PROPERTY

STILLWATER COUNTY  
RAPELJE, MT



### STEVE MCINTOSH

BROKERAGE OWNER / AGENT

(406) 580 - 1048

[SMCINTOSH@MONTWYOWEST.COM](mailto:SMCINTOSH@MONTWYOWEST.COM)

**MONTANA-WYOMING WEST  
RANCH BROKERAGE**

912 SOLITA DR. / BILLINGS, MT 59105

PHONE: (406) 580-1048

[WWW.MONTWYOWEST.COM](http://WWW.MONTWYOWEST.COM)

## STAND OF ROUNDUP READY ALFALFA ON THE FARMLAND



**DESCRIPTION:** Hailstone Basin Land & Livestock is an Efficient and Flexible Agricultural Property located near Rapelje, Montana. This Ranch offers a Practical and Productive mix of Native Grass Grazing and 88 +/- acres of Roundup Ready Alfalfa, supporting both strong weight gains and a dependable winter feed base. The Property is divided into (3) Well-Watered Pastures, served by (2) Reliable Wells, and features recently updated Working Corrals for ease of Livestock Handling. Surrounded by Tall Sandstone Bluffs and Sweeping Views of the Beartooth and Crazy Mountains, the Ranch combines Functionality with Scenic Beauty. Upland Game Birds, Pronghorn Antelope, and Mule Deer frequent the area, offering Recreational and Hunting opportunities. Whether you're looking to establish a Home Base for a Mid-Sized Herd, expand Summer Grazing, or run a Yearling Operation, this property presents a Solid Foundation for Building or Growing your Montana Legacy.

**ACREAGE:** Hailstone Basin Land & Livestock is comprised of a total of approximately, 1,637.8 +/- Total Deeded Acres (*per Montana Cadastral*) featuring Native Grass Grazing and a 88 +/- acre stand of Roundup Ready Alfalfa.



**LOCATION:** The entirety of Hailstone Basin Land & Livestock lies within Stillwater County, located approximately 32-miles Northeast of **Columbus**, Montana, easily accessible by MT Hwy-306 (Rapelje Rd.), Molt-Rapelje Rd. & Hailstone Basin Rd (only 4-Miles of well-maintained graveled county road. The Ranch also is just 39-miles Northeast of **Billings**, Montana's largest city, via, Interstate 90, MT Hwy-306 (Rapelje Rd.), Molt-Rapelje Rd. & Hailstone Basin Rd. (67-Miles) with only 4-miles of gravel -or- via Molt Rd., Molt-Rapelje Rd. and Hailstone Basin Rd. (39-miles) this route offering only 22-miles of well cared for graveled county road.

With an abundance of Farms / Ranches in the area it retains a rich Western Heritage and Privacy that rolls through the perfect blend of Grasslands, Rolling Cropland and Beautiful Sandstone Bluffs, yet offers convenient access to Supplies and Entertainment.





**PRODUCTION:** Hailstone Basin Land & Livestock had been historically utilized as a Base for an Aviation Ag Spraying Company (Crop Dusting), Pasture and Crop. In recent years it has nicely facilitated as Summer Grazing and additional Hay for an established operation in the area. It has stocked between 45-70 Animal Units of Pairs and/or Heifers for 4-6 months dependent on moisture and grazing practices, usually conservatively grazing the grass and leaving forage for the coming year. With having multiple pastures of Native Grass and having No Pine Trees, this would make a great addition for Summer Grazing for a Larger Cow/Calf Operation or Standalone for a Smaller Operation. It could also make an excellent Yearling outfit with a little additional fencing. Supplemental feeding requirements vary on the winter conditions and Hay is typically fed in the area from Dec to the end of April.

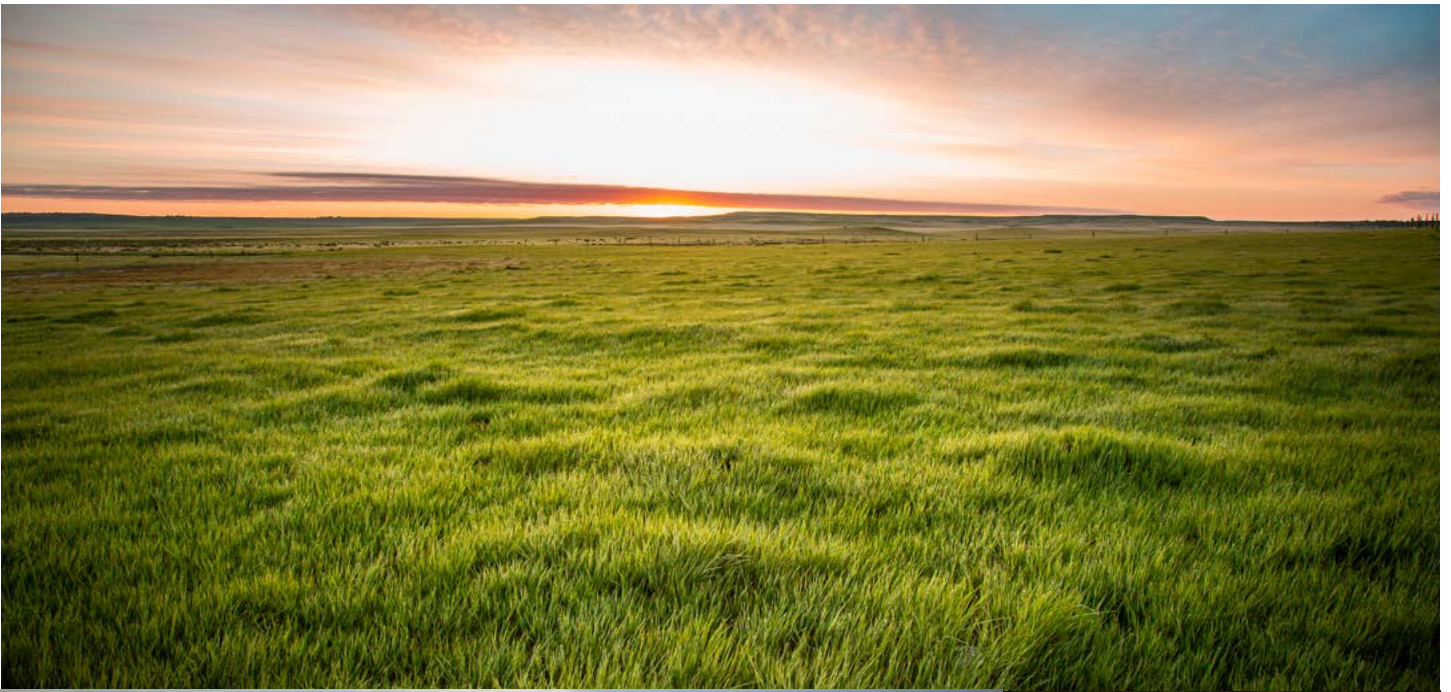
Historically, the Roundup Ready Graze On Variety - Alfalfa produces between .75-1.75 tons per acre, usually seeing 1 cutting but sometimes getting 2 cutting, being moisture dependent in the later summer months.

*A Local Agronomist has provided the best reasonable Crop Yields using Continuous Crop Rotation and 10-year-average Estimates for the following crops. These production numbers will vary with Moisture / Farming Practices used but offer a reasonable look at the Production Potential.*

<b>Grass Hay</b> (Species Dependent)	.75 -1.5 Ton(s)	per Acre on years with Decent Moisture (per Local Agronomist's Estimate)
<b>Alfalfa</b>	1 - 2 Ton(s)	per Acre (per Local Agronomist's Estimate)
<b>Hay Barley</b>	1 - 2 Ton(s)	per Acre (per Local Agronomist's Estimate)
<b>Winter Wheat</b>	35-40	Bushels per Acre (per Local Agronomist's Estimate)
<b>Barley Grain</b>	45-50	Bushels per Acre (per Local Agronomist's Estimates)



Per the FSA-156EZ, the Farm/Ranch has 88.29 +/- deeded acres of Farmable ground and a total of 87.80 Base Acres.





**Improvements:**

- House – (1934) approx. ~1,310 sqft. 3 Bedroom, 1 Bath  
*Uninhabited 2016 – Settling Foundation*
- Detached Garage 40’ x 28’
- Bunk House 20’ x 16’
- Calving Barn 30’ x 40’ Concrete Floor
- Tool Shed 12’ x 12’ (Near Calving Barn)
- Old Storage Shed 12’ x 30’ Outbuilding N.W. of House
- Airplane Hangar 40’ x 30’ (3) Sided
- Corrals Updated Pipe / RR Tie / Continuous Fence
- (3) Grain Bins w/o aerators approx. 6,105 +/- total bushels of grain storage
- (1) Grain Bins Missing Roof
- Fiber Optic Cable (Internet) is being Installed in Roadway Summer/Fall 2025
- Cell Phone Service - available on most portions of the ranch especially on the higher elevations





The Hailstone Basin Land & Livestock Headquarters is positioned, just off Hailstone Basin Rd., offering reliable access off a well-maintained County Road. The Home has seen some substantial foundation settling and has been uninhabited for many years. However, this leaves a perfect area for a Future Modular, Shop/House or Home with Water, Power & Possible potential to utilize the old Septic System. A 28' x 40' Garage allows for storage of Vehicles / ATV/UTV's / Tools, while the 30'x 40' Calving Barn with a Concrete Floor, provides ample cover and options within the working corrals. A nice set of corrals provides a great foundation to the working facilities of your dreams. These facilities are very functional and add Value to the property but keeps your investment focused on the Land and its Production, while also offering a Blank Canvas for Homesites and addition Facilities that could be built to meet your specific needs.



**WATER:** Hailstone Basin Land & Livestock has a total of (3) Water Rights associated with the Parcels deeded acres. (1) Water Right for Domestic Use and (2) Water Rights for Livestock, Water is provided by (2) Active Wells. The Well in Section 19 feeds a 5'x12'x2' Rectangular Fiberglass Tank for the South Pasture. The Well in Section 18 provides water through a water line to (2) Thermo-Sink Double Bowl, Energy-Free, Buried Livestock Watering Systems, (1) Located at the Corrals in Section 18 and (1) Located in the S.E. corner of Section 7. Seasonal Tributaries run through Sections 6, 7 and 18 to the Hailstone National Wildlife Refuge & Waterfowl Production Area, Bordering the Ranch to the West. The current Facilities for Livestock/Wildlife Water provide a base supply of water for the needs of the Ranch as it is operated, but additional water can be developed to further the efficiency.

Domestic Water is provided by the Well Located in Section 18.



**(3) Filed Water Rights**

<u>Water Right #</u>	<u>Source</u>	<u>Use</u>
43Q 36545-00	Well	Livestock
43Q 36547-00	Well	Domestic
43Q 36647-00	Well	Livestock



**Water & Improvements**

- (2) Total Wells
  - (1) Electric Well feeding (1) Tank - Located on Section 19
  - (1) Electric Well feeding (2) Buried Thermo-Sink Waterers in Sec. Section 7 & 18
    - ⇒ This Well also feeds the Homesite
  
- Multiple Tributaries of Hailstone National Wildlife Refuge / WPA                      Seasonal / Run-off



**WILDLIFE / HUNTING / RECREATION:** Hailstone Basin Land & Livestock offers some of quality habitat and terrain which provides exceptional viewing/hunting of Mule Deer and Pronghorn Antelope. All portions of the Ranch lie within the Elk/Deer/Lion District 515 and Antelope District 576, known to hold quality caliber animals for all species of Elk, Mule Deer and Pronghorn Antelope. This transition area between Native Grasslands and Cropland, provides a unique balance to attract Sharp-tailed Grouse, Hungarian Partridge and Doves to favorable Upland Gamebird Hunting. If Prairie Dog Shooting is your Hobby of Choice, there are a couple of Prairie Dog Towns on the property to offer plenty of Fun and shouldn't have much trouble gaining permission from some of the Farmers and Ranchers in the area to help thin a few out within their fences as well.

### Attention Visitors

Welcome to the combined 1,988-acre Hailstone National Wildlife Refuge and Waterfowl Production Area (WPA), managed by the Charles M. Russell Wetland Management District.

The lowland area here historically contained an earthen dam. Over the years, heavy metals and salts accumulated in the reservoir due to natural evaporation and the dam was removed to re-create a free flow through system. Some grassweed and shallow salt-tolerant grass species can grow in these soils, while other native grasses and plants, such as prickly pear cactus, flourish in areas having less alkali-saline soils. These areas provide habitat and food sources for mammals, birds, pollinators, and other wildlife. During early spring, pools of water are present here making this area important for waterfowl, marsh birds, and wading birds during this time.

Both Hailstone Refuge and Waterfowl Production Area land units are managed jointly together as one. This area is open to hunting, trapping, wildlife observation, and wildlife photography.

**Access**

- Access into the area is by foot only.
- Please park along the access road or at the end of the road in the designated parking area.

**Hours**

- Hunting hours follow State regulations.

**Hunting Regulations**

- Hunting for woodcock, upland game birds, and big game in compliance with all applicable State hunting regulations is permitted on this refuge unit.
- Steel or other non-lead shot must be used to harvest waterfowl and upland game birds. Possession of lead shot in the field is prohibited.
- Personal property, such as portable blinds, must be removed each day.

**Prohibited Activities**

- Trapping on the Refuge (is permitted on the WPA only).
- Predator hunting.
- Shooting public dogs.
- Hunting, trapping, or killing any wildlife species, predators or crows, nor possessing other State regulations for taking a license, and/or classified by the Department of Fish and Game as "any game species". Such species include, but are not limited to: coyotes, rabbits, hares, wild turkeys, quail, ducks, geese, swans, porcupine, porcupine, muskrat, etc.
- Offroad mechanical travel.
- The use of trail or game cameras.
- Dog use.

You are here.

**Permitted:**

- Camping on public lands, tents, and fires.
- Bird dog training using game birds - wild and/or captive-bred.
- Game photography.
- Collecting any wildlife, parts thereof, skins, natural and cultured items.
- Target shooting - archery or firearm.

**Prohibited:**

Persons possessing, transporting, or carrying firearms on National Wildlife Refuge Bureau lands must comply with all provisions of State and local law. Persons may only use (discharge) firearms in accordance with refuge regulations (50 CFR 22.42 and specific refuge regulations in 50 CFR Part 171).

Firearms may only be fired in conjunction with a legal hunt for which the hunter is licensed.

**National Wildlife Refuge violation reporting hotline:**  
1-844-FWS-TIPS (337-8477)

**State hunting and fishing violation reporting hotline:**  
1-800-TIP-MONTY (847-6668)

The Deeded Acres of Farm/Ranch offer some dedicated Hunting and Recreational opportunities within its Borders, but also has Hailstone National Wildlife Refuge & Waterfowl Production Area, Bordering the Ranch on the West, providing an additional 1,828-acres of offers important Habitat for Waterfowl, Marsh Birds and Wading Birds during the Spring as well as providing additional habitat and opportunity for the Upland Hunter. Also, the Ranch has approximately 20,000 +/- additional acres of other State Lands, Wildlife Management Areas and Block Management Access, within 15-20 miles, providing additional Hunting/Recreational access and opportunity.



~

### NOTABLE RECREATION OPPORTUNITIES WITHIN THE GENERAL AREA ~

**FISHING:** The focus on the Ranch is Production with some Big Game Hunting and Wing Shooting, but if you enjoy chasing Trout or Warm Water Species, then you're in for a treat filled with Tight Lines and Burning Drag. Located at the heart of prime trout fishing destinations of Central and Eastern Montana, this Ranch enjoys a Central position within a 2-2.5 hour radius of multiple Premium Rivers, including the Bighorn, Musselshell, Yellowstone, Boulder, and Stillwater Rivers. These scenic waterways offer abundant fishing opportunities, with various trout species such as rainbow, brown, and cutthroat Trout. Anglers can also explore nearby gems like Big Spring Creek near Lewistown and Rock Creek near Red Lodge, known for their thriving populations of brown, rainbow, and cutthroat trout. With a multitude of options just a short drive away, this ranch provides easy access to exceptional fishing experiences for enthusiasts of all skill levels.

Being the nearest and possibly the most unique, the Musselshell River, one of Montana's hidden treasures, lies just to the North along Hwy 12 and offers a variety of species of fish. The upper stretch of the river, from Harlowton up to Martinsdale, is the cooler, freshwater portion that provides pockets of Aggressive Brown, Rainbow and Brook Trout with a ration of Whitefish to keep you busy for the day. Be sure to stop in at Martinsdale Reservoir and enjoy a day catching Trout or take your chance at Roping a 40-50" Tiger Muskie or Kokanee in Deadman's Basin, one of Central Montana's favorite Boating / Recreational lakes. Around the Harlowton area, the water warms and the downstream portions of the river near Melstone, MT hold vast amounts of Smallmouth Bass, Sauger and Giant Catfish that can break the 10-pound mark. Relaxing afternoons, low pressure and unique species lay just an adventurous drive and a cast away.



*Diverse "Breaks" in the CMR Wilderness Area*



**FORT PECK LAKE – Hunting Fishing & Recreation Complex:** Approx. 110-230 Miles to the North & East lies the Expansive *Fort Peck Lake Reservoir - Hunting, Fishing & Recreation Complex*, providing Endless Outdoor Opportunities. Fort Peck Reservoir, Montana's largest body of water, has more than 50 different species of Fish that swim within its boundaries. The lake is about 134 miles in length and has a maximum depth of 220 feet when full. There are over 1,520 miles of shoreline, longer than the California coast. The reservoir was built from 1933 through 1937 by constructing a 3.8 mile-long dam across the Missouri River. Just a few of the most pursued species include Walleye, Northern Pike, Paddlefish, Sturgeon, Sauger, Lake Trout, Small Mouth Bass and Chinook Salmon. A paved road for larger vehicles provides direct access to the reservoir at Fort Peck Marina, located near the West side of the dam. Other access roads are gravel and/or dirt, leading to Hell Creek Bay, 26 miles north of Jordan, and one on the South fork of Rock Creek Bay, about 10 miles West of Highway 24. All Marinas include concrete boat ramps. A multitude of gravel/dirt roads wind through the enormous complex providing access to countless areas of fishing/hunting/recreation opportunity.

Surrounding this large expanse of water is the *Charles M. Russell (CMR) National Wildlife Refuge*, managed by the US Fish and Wildlife Service, which provides over 1.1 MILLION acres of public land for fishing, hiking, hunting, camping, bird-watching, and other outdoor recreation. "The Breaks" are known to hold some of the best Elk Genetics in the State and provides one of the most challenging and remote geographic locations in the West.





Don't forget the many opportunities to Ride Horseback/Hike/Bike and ride ATV/UTV's on the Ranch or in the surrounding areas. With off-road trails on much of the Public Land and Missouri River Breaks, you'll find Adventurous/Scenic Hikes/Drives/Rides waiting for you. Outdoor Enthusiasts could park their Vehicles / ATV's in the Garage and keep them stored safely for the off-season.

You're also just a short drive away from many Montana, & Wyoming recreational destinations, including Yellowstone National Park, that can be entered through Red Lodge, and the Beartooth Pass or the East Entrance through Cody, WY. Cody, known for its Cody Night Rodeo (every Summer night at 8pm) is a trendy, Western, Tourist town that is the perfect outlet for all types of Outdoor Recreation. 3-hours down the Road is Miles City, MT, the Cowboy Capital of the World, is known for its world-famous Bucking Horse Sale, an event that should not be missed.



**MONTANA** - "THE WAY IT ALWAYS WAS."

## LOCATION & SERVICES:

**Rapelje, MT** (population 88) – *approx. 7-Miles (12 min)*

Rapelje is a small, quiet agricultural town. It is home to multiple the Stockman Café, MechTech Welding & Fabrication, Local Farmers Union Fuel Card Pump, Post Office, Church, and Class “C” Rapelje School (K-12).



**Broadview, MT** (population 139) – *approx. 19-miles (25-minutes)*

Broadview is a quiet little town that Features a Gas Station, Auto Repair Shop, Grain Elevator, Bar & Grill, and Class “C” Broadview K-12 School.



**Columbus, MT** (population 1,925) – *approx. 32-Miles (37 min)*

The County Seat of Stillwater County offers many amenities and lies 32-miles to the South on Paved Hwy-306. It is home to multiple Restaurants, Grocery Store, (2) Gas Stations, (2) Hardware Stores, Ford Dealership, Montana Silversmiths, Bars, Churches, and Class “B” Columbus High School.

"Stillwater Golf Course" is a well-designed and challenging 9-hole course that is well cared for, providing a wonderful experience for golfers.

Wolterman Memorial Airport – 6S3 (Elev. 3,577') Runway 10/28 Dimensions: 3800 x 75 ft. / Asphalt, in good condition  
100LL Fuel Available 24/7 Credit Card Self Service: Grade 100LL Gasoline / Jet A-1 freeze point -50 C

**Billings, MT** (population 109,577) – *approx. 41-miles (50-minutes)*

Billings is the largest City in Montana and offers extensive services, has (2) major hospitals, as well as a wide variety of shops, restaurants, breweries, museums, a zoo, major theaters (8) golf courses and event centers bringing in top performers.

Billings Logan International Airport (BIL), the largest commercial airport in Montana, is located only 87 miles from the Resort. It offers services from multiple major airlines and direct flights to many larger cities including Dallas, Denver, Minneapolis, Las Vegas, Portland, Salt Lake City, Seattle, and Phoenix. For current flight schedules, please visit [www.flybillings.com](http://www.flybillings.com).

(BIL) is also home to Edwards Jet Center and offers FBO services including aircraft parking, hangar, fuel, maintenance and charter services. [www.edwardsjetcenter.com](http://www.edwardsjetcenter.com)

**Red Lodge, MT** (population 2,328) – *approx. 75 Miles (1 hr. 21 min)*

Red Lodge is the county seat of Carbon County, MT, nestled in the Beartooth Mountains, offering World-Class Outdoor Recreation and access to Yellowstone National Park via the beautiful Beartooth Highway. Red Lodge offers many amenities including (2) Hospitals, Dental Office, Grocery Store, Hardware/Lumber Stores, Auto Repairs/Parts, Banks, Restaurants, Breweries, Wineries, Shopping, Motels, Camping, Hair/Nail Salons, 18-hole Golf Course, and Red Lodge Mountain, one of Montana's Premier Ski Destinations.

Red Lodge is also a Bustling Summer Hot Spot, with events planned nearly every week of the Summer, including: PRCA Extreme Bull Riding Tour, Songwriter's Festival, July 2, 3 and 4<sup>th</sup> of July Parades, the famous Home of Champions Rodeo (90<sup>th</sup> Anniversary), the 28<sup>th</sup> Annual Beartooth Motorcycle Rally, Concerts, and Adventure Races to only name a few.

**Bozeman, MT** (population 53,293) – *approx. 131 Miles (2 hours)*

The County Seat of Gallatin County, Montana, is the fourth-largest city in Montana and growing. Bozeman is also home to Montana State University, recognized by Forbes as the #1, Top Public University in the State and is also Known to be Ranked as one of the Top Outdoor Sports & Recreation Locations in the Nation. Located in the Gallatin Valley, surrounded by Four Mountain Ranges, Bozeman offers many Outdoor Recreational activities such as, Fly-Fishing, Hiking, Hunting, Fishing, Rock Climbing, Back Country Exploring, and (2) Ski Resorts less than an hour away. Bozeman amenities include The Museum of the Rockies, a number of Hotels & Motels, a variety of Shops, Restaurants, Breweries, Wineries, Theaters, Golf Courses, Event Centers, and Art Galleries.

Bozeman Yellowstone International Airport (BZN), Montana's busiest airport, is surrounded by the Vistas of the Bridger, Gallatin, Madison and Tobacco Root Mountain Ranges and provides the only year-round services for two Yellowstone National Park entrances. It also provides non-stop flights to over 20 markets in the United States with connections all over the world. For current flight schedules, please visit [www.bozemanairport.com](http://www.bozemanairport.com)

(BZN) is also home to (2) FBO operators, Jet Aviation and Yellowstone Jet Center, both provide top-notch aeronautical services such as fueling, hangar service, tie-down and parking, aircraft maintenance, and much more. (BZN) also is the home for (2) Longstanding and Reputable, Helicopter Services: Central Copters & Rocky Mountain Rotors.

**GPS COORDINATES:** Ranch Headquarters 46.00635, -109.15574

**MINERALS:** All of Seller's minerals, if any, transfer to the Buyer at closing (*the Seller may Own NO Minerals*)

**ELEVATION:** 4,000 ft. - 4,200 ft.

**CLIMATE:** With an average Elevation of approximately 4,000 feet, the Rapelje area has a semi-arid climate with Average Precipitation of 15 +/- inches and an average of 56.3 inches of snow each winter. Historically the warmest month of the year is July with an average daily high/low of 86°/52°. The coldest month is January with an average high/low of 36°/14°.

**TAXES (2024):** per: Stillwater County Treasurer  
**\$1,996.12**

**PRICE & TERMS:** *Please Call for Information*

**SUMMARY / COMMENTS:** A Rare Opportunity to buy a nice sized Grazing and Agricultural Property in Central Montana that is Efficient and offers Flexibility for many different buyers. Low cost inputs, strong native grass, productive hay ground and a side of Recreation and Hunting, makes this Ranch something to look at for adding to your current successful operation or starting your Montana Legacy.

Cell phone service is available on most portions of the ranch, especially on the higher elevations, providing reliable convenient communication and additional safety.

**CONTACT:**

**STEVE MCINTOSH**

BROKERAGE OWNER / AGENT

(406) 580 - 1048

[SMCINTOSH@MONTWYOWEST.COM](mailto:SMCINTOSH@MONTWYOWEST.COM)

**Disclaimer**

\*\*\* All information is from sources deemed reliable but cannot be guaranteed as accurate. Prospective buyers are encouraged to research the information to their own satisfaction. Any offer is subject to errors, omissions, prior sale, change or withdrawal without notice, and approval of seller. Water Rights are subject to the Montana Water Court.

Seller hereby makes know that there may be variations between the deeded property lines and the location of the existing fence boundary lines. The Seller makes no warranties with regard to the location of the fence lines in relationship to the deeded property lines, nor does the Seller make any warranties or representation with regard to specific acreage within the fenced property lines.

The property is selling in its "as is-where is" condition which includes the location of the fences as they now exist. Boundaries shown on any accompanying maps are approximate. The maps are not to scale and are for visual aid only. They accuracy of the maps and information portrayed thereon is not guaranteed nor warranted. \*\*\*

# LEGAL DESCRIPTIONS

Legal Descriptions per Montana Cadastral  
<http://svc.mt.gov/msl/mtcadastral>

\*Exact Legal Descriptions to be Determined by Title Commitment\*

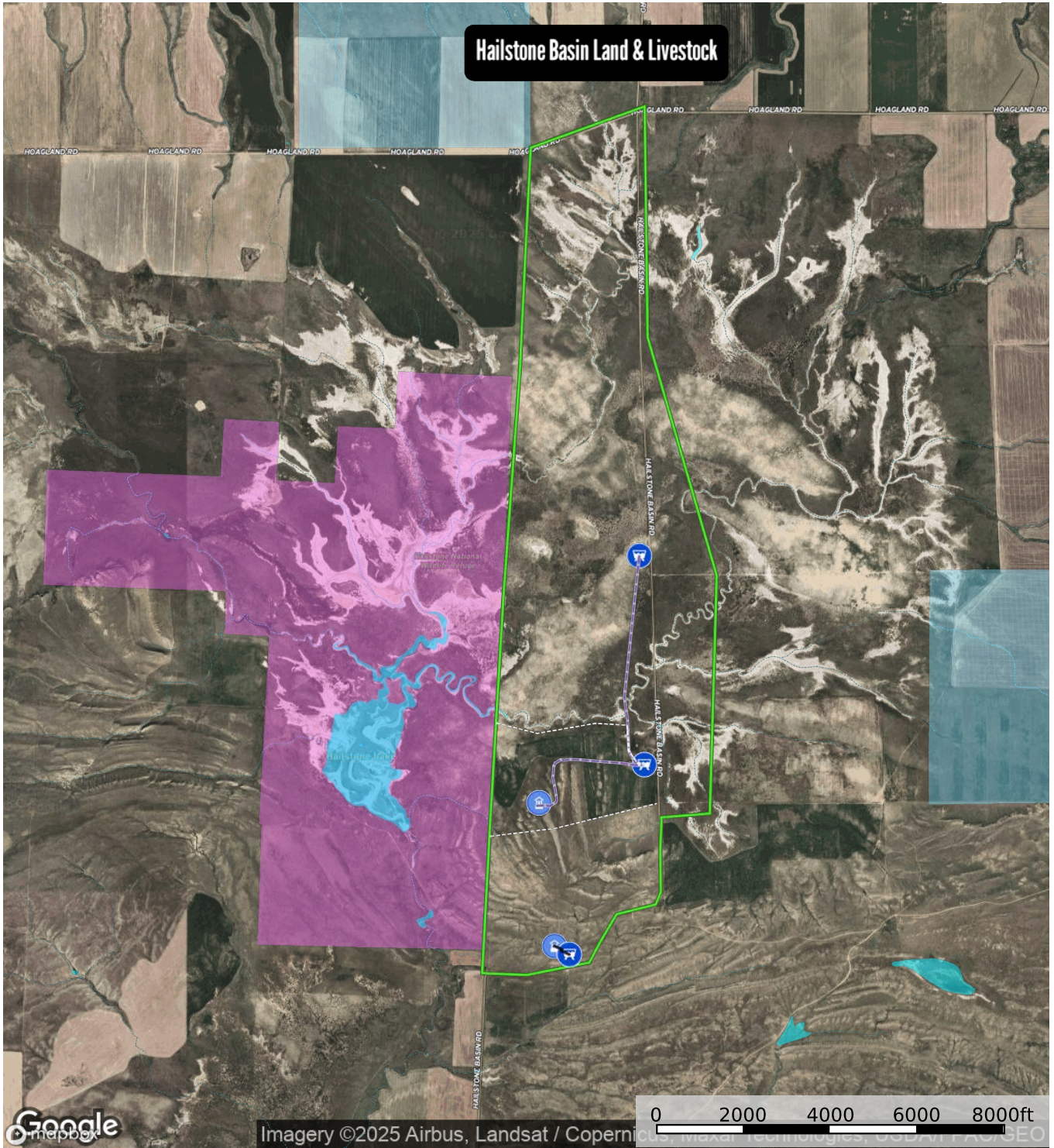
## DEEDED: HAILSTONE BASIN LAND & LIVESTOCK: PARCELS

### *Stillwater County:*

S06, T03 N, R21 E, LOTS 10,11,16,17	334.36 acres
S07, T03 N, R21 E, ALL	396.00 acres
S18, T03 N, R21 E, ALL	632.44 acres
S19, T03 N, R21 E, FRL NW4 NW OF ROAD	275.00 acres
<b>TOTAL DEEDED ACRES:</b>	<b>1,637.80 acres +/-</b>

# HAILSTONE BASIN LAND & LIVESTOCK MAPS

Hailstone Basin Land & Livestock  
Stillwater County, Montana, A



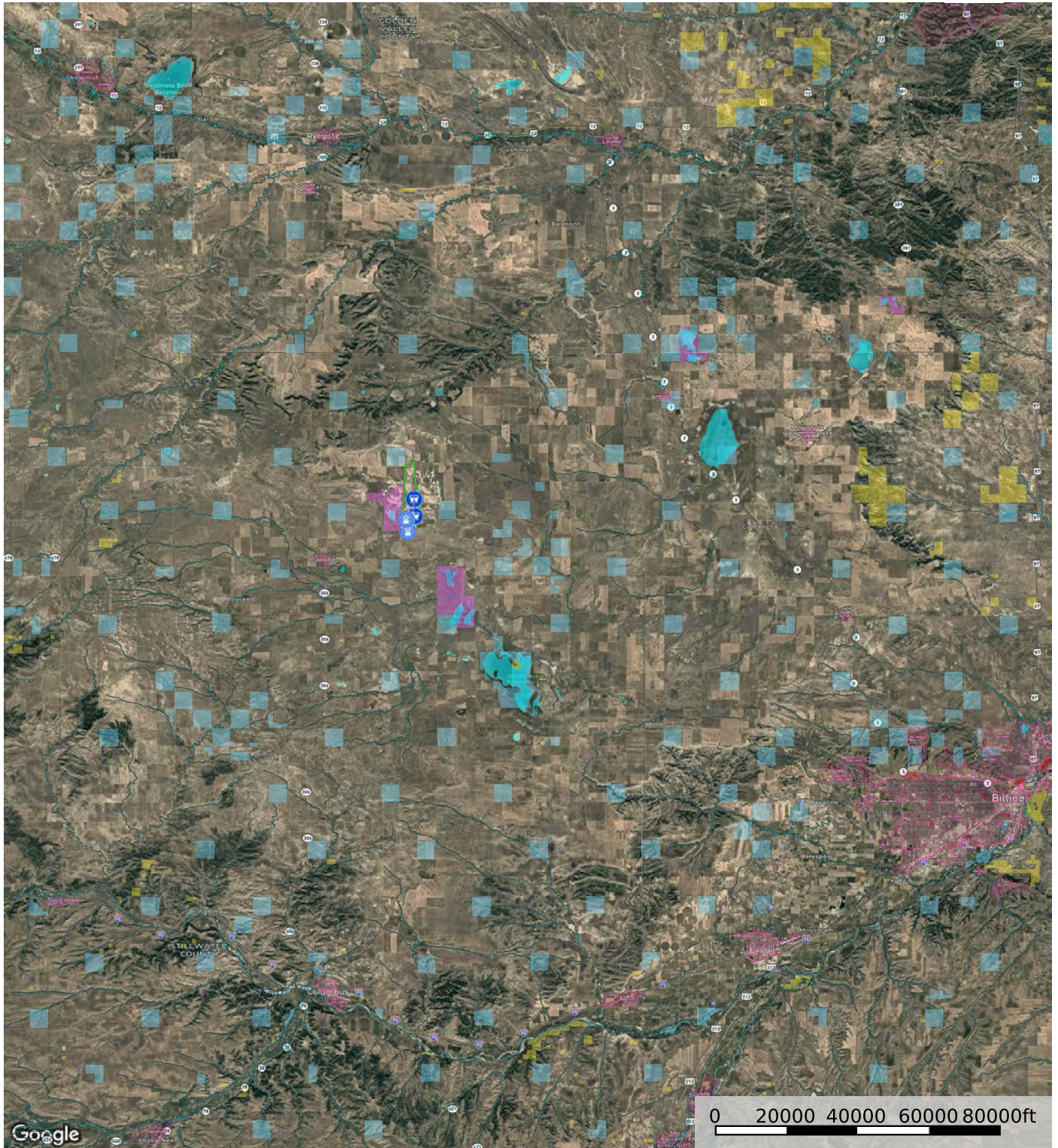
- Water Storage Tank
- House Well (will go dry on a)
- Best Well (2 gpm 24/7/365)
- Fence
- Cattle Tank Pipeline
- Boundary 1
- Forest Service
- State Land
- Fish and Wildlife
- National Park
- Other
- BLM
- Local Government
- Stream, Intermittent
- River/Creek
- Water Body

Steve McIntosh  
P: (406) 580-1048    smcintosh@montwyowest.com

The information contained herein was obtained from sources deemed to be reliable. Land id™ Services makes no warranties or guarantees as to the completeness or accuracy thereof.

# NEARBY PUBLIC LANDS

Hailstone Basin Land & Livestock  
Stillwater County, Montana, A



- |                    |                               |                             |                      |                      |            |                |            |                   |               |
|--------------------|-------------------------------|-----------------------------|----------------------|----------------------|------------|----------------|------------|-------------------|---------------|
| Water Storage Tank | House Well ( will go dry on a | Best Well ( 2 gpm 24/7/365) | Fence                | Cattle Tank Pipeline | Boundary 1 | Forest Service | State Land | Fish and Wildlife | National Park |
| Other              | BLM                           | Local Government            | Stream, Intermittent | River/Creek          | Water Body |                |            |                   |               |

Steve McIntosh

P: (406) 580-1048

smcintosh@montwyowest.com



The information contained herein was obtained from sources deemed to be reliable. Land id™ Services makes no warranties or guarantees as to the completeness or accuracy thereof.