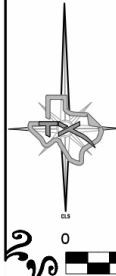
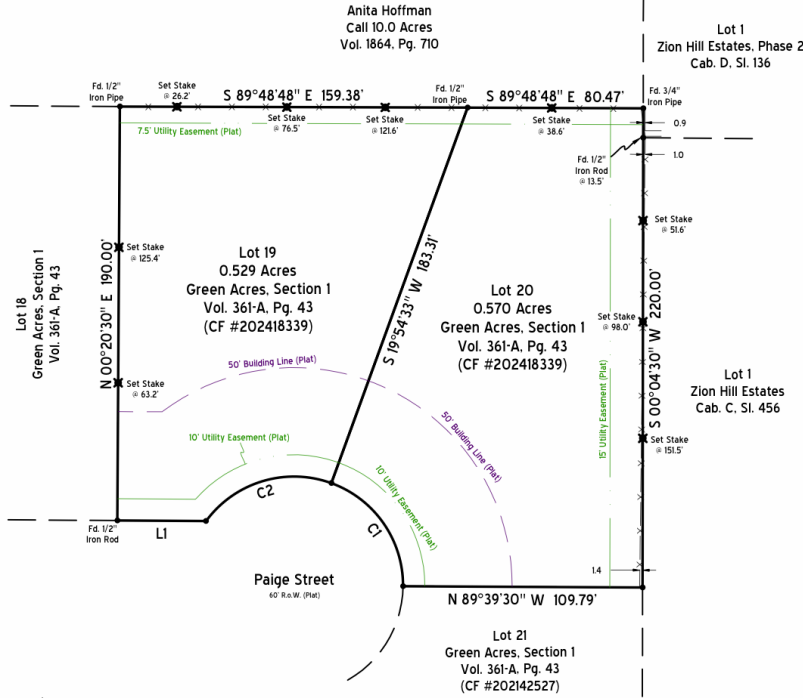


Points on Line Sketch

W2509067 - 117 Paige Street  
October 6, 2025

Curve	Radius	Arc	Chord Bearing	Chord
C1	50.00'	61.30'	N 34°46'40" W	57.53'
C2	50.00'	64.42'	S 73°11'22" W	60.06'

Anita Hoffman  
Call 10.0 Acres  
Vol. 1864, Pg. 710



This is not a survey & should not be recorded for any reason.  
 Bearings, Distances, and/or Areas derived from GNSS observations and reflect N.A.D. 1983, Texas State Plane Coordinate System, North Central Zone 4202. (Grid)  
 Please consult all applicable governing entities regarding rules & regulations, that may affect construction on this property.  
 All corners are set 1/2" iron rods with blue plastic caps stamped "Texas Surveying, Inc", unless otherwise noted.

Line	Bearing	Distance
L1	N 89°39'30" W	40.60'

**TEXAS SURVEYING & ENGINEERING**  
 WEATHERFORD - MINERAL WELLS - ALEDO INC.  
 SURVEYING FIRM NO. 10100000 - ENGINEERING FIRM NO. F-17586