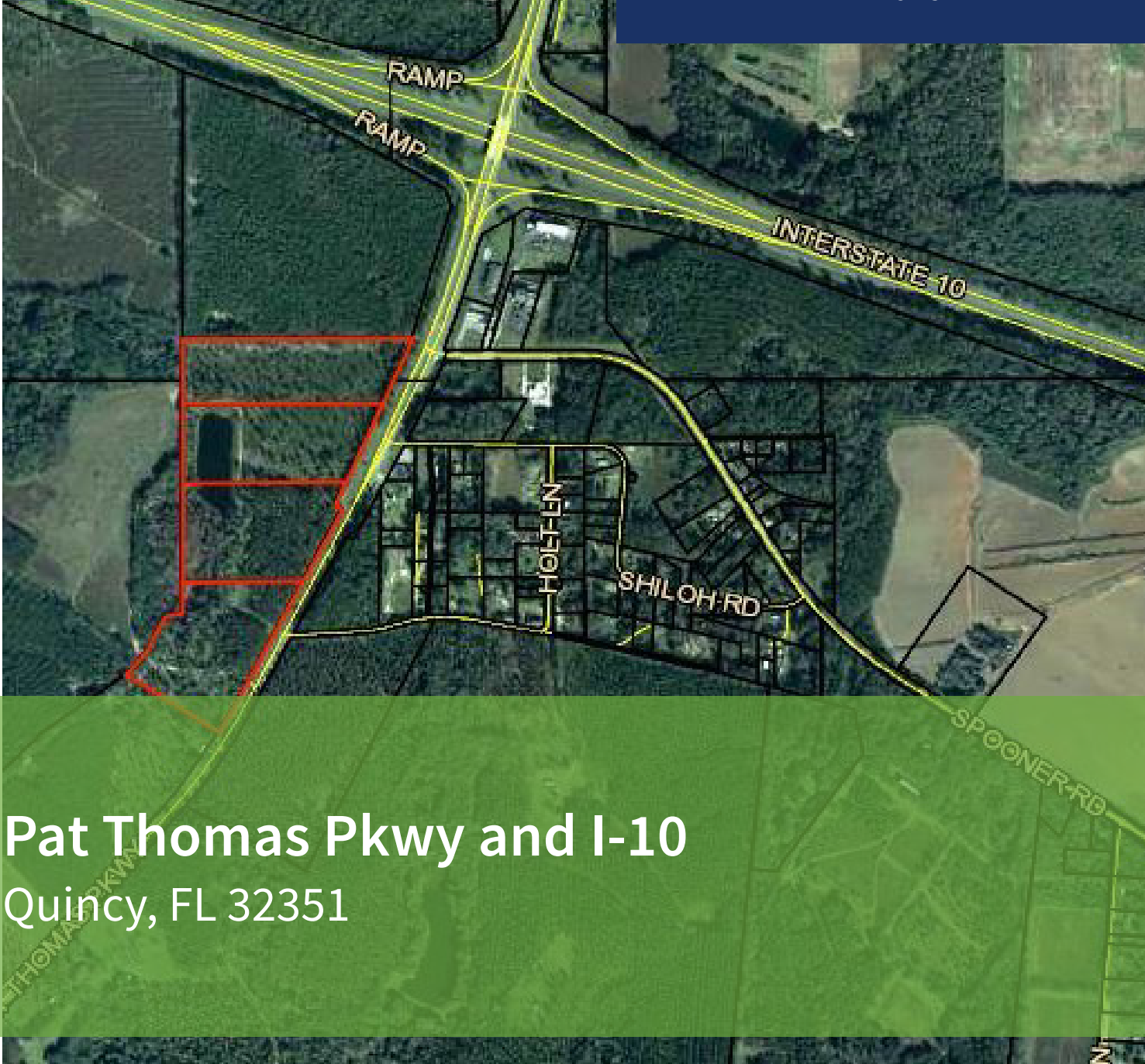




COMMERCIAL REAL ESTATE

LAND FOR SALE



Pat Thomas Pkwy and I-10

Quincy, FL 32351

CLARK SMITH
Sales Associate
850.510.6333
csmith@tlgproperty.com

TLG REAL ESTATE SERVICES
3520 Thomasville Road, Suite 200
Tallahassee, FL 32309
O: 850.385.6363



EXECUTIVE SUMMARY

PAT THOMAS PKWY AND I-10

QUINCY, FL 32351

**OFFERING SUMMARY****Price / Acre:** \$50,000.00 / Acre**Lot Size:** 49.71 Acres**Zoning:** Commercial**APN:** 3-35-2N-4W-0000-00110-0100**PROPERTY OVERVIEW**

49.71 acres of commercial property, consisting of (4) 12.43 acre parcels, annexed into the City of Quincy

2,200' frontage on S.R. 267, just South of Interstate I-10.

Adjacent users include Citgo Gas Station, three motels, Walmart, and Murphy Oil.

Utilities available through the City of Quincy and others.

LOCATION OVERVIEW

State Road 267 & I-10

PARCELS MAY BE SEPARATED

Clark Smith
850.510.6333
csmith@tlgproperty.com

TLG REAL ESTATE SERVICES
3520 Thomasville Road, Suite 200, Tallahassee, FL 32309
850.385.6363





RETAILER MAP PAT THOMAS PKWY AND I-10 QUINCY, FL 32351



Clark Smith
850.510.6333
csmith@tlgproperty.com

TLG REAL ESTATE SERVICES
3520 Thomasville Road, Suite 200, Tallahassee, FL 32309
850.385.6363

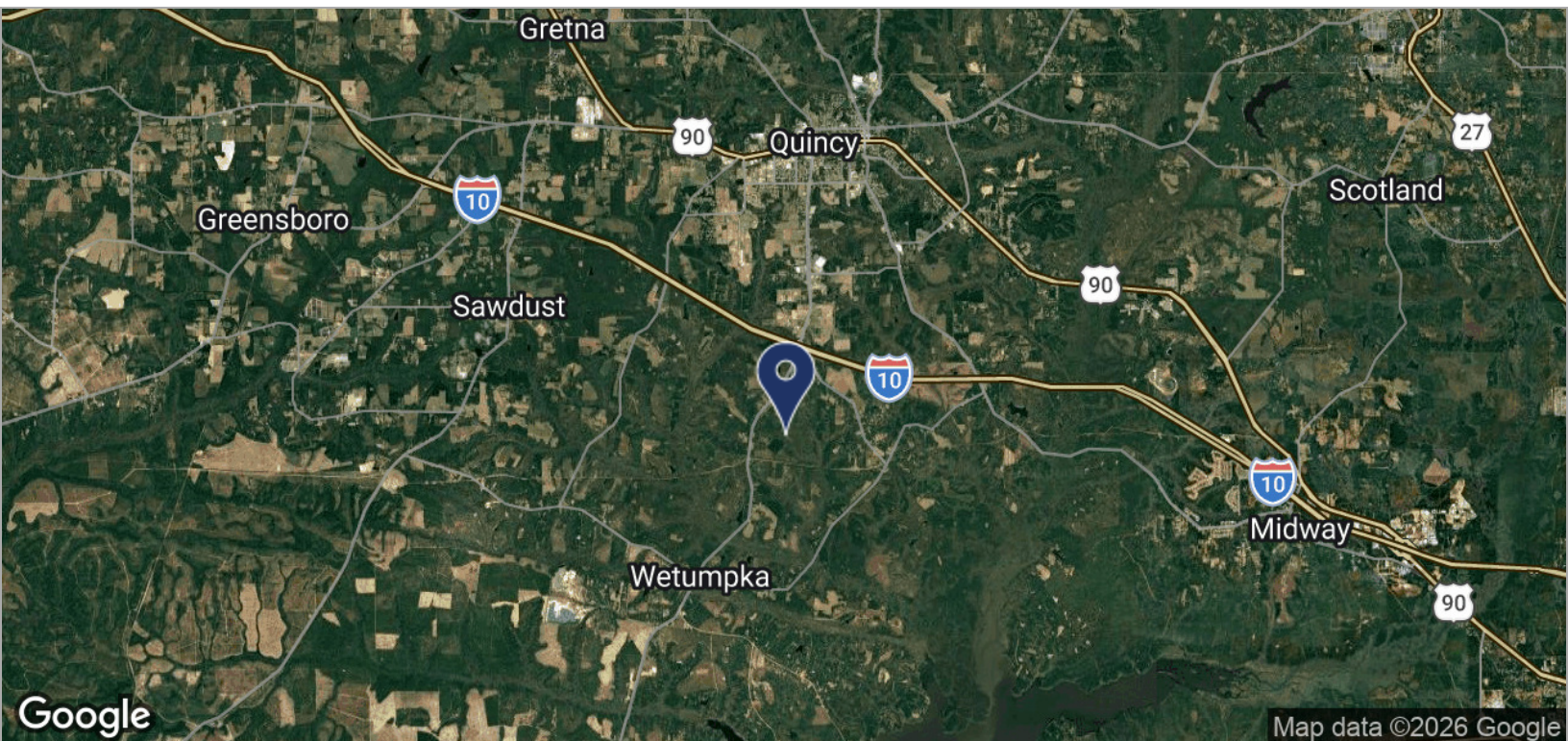
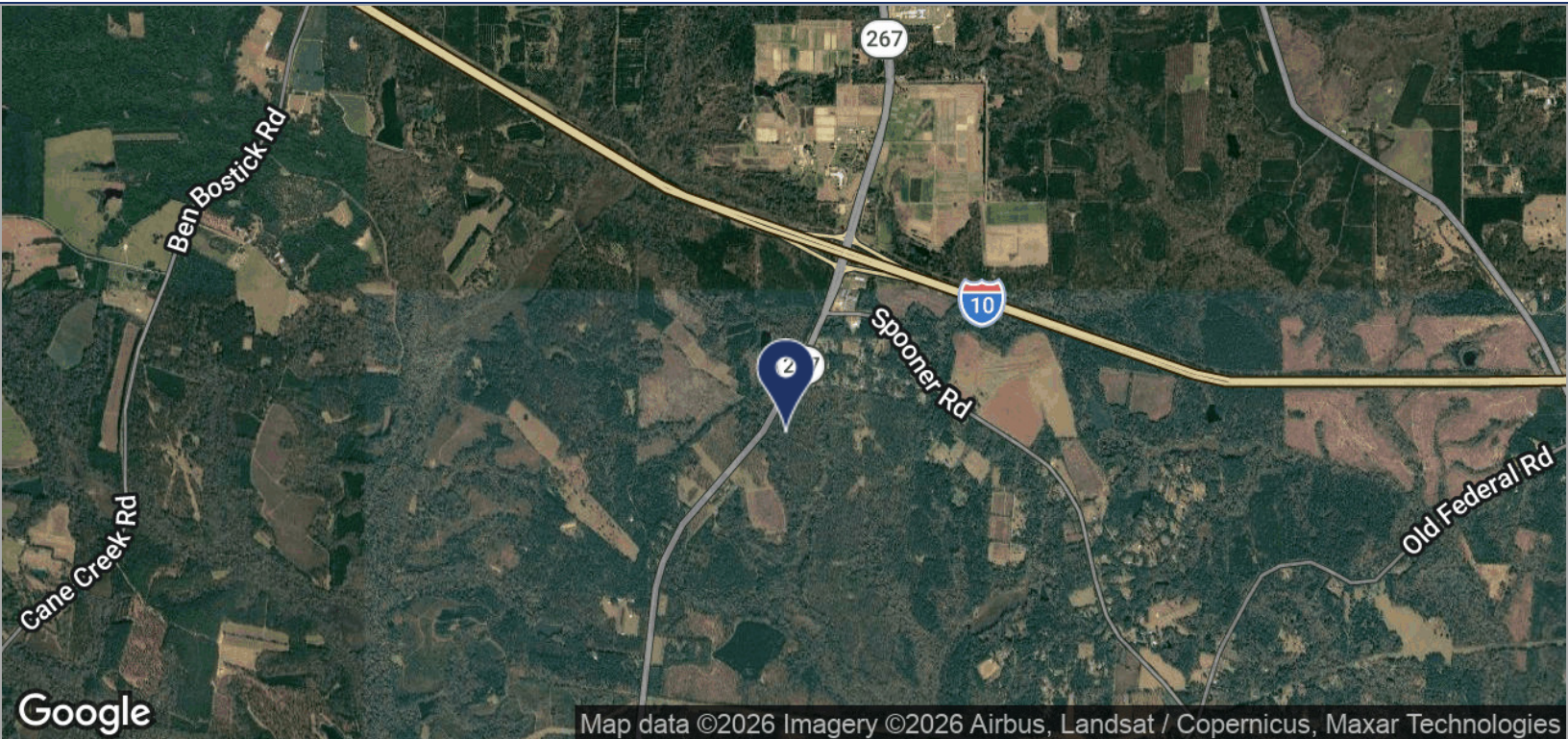




LOCATION MAPS

PAT THOMAS PKWY AND I-10

QUINCY, FL 32351



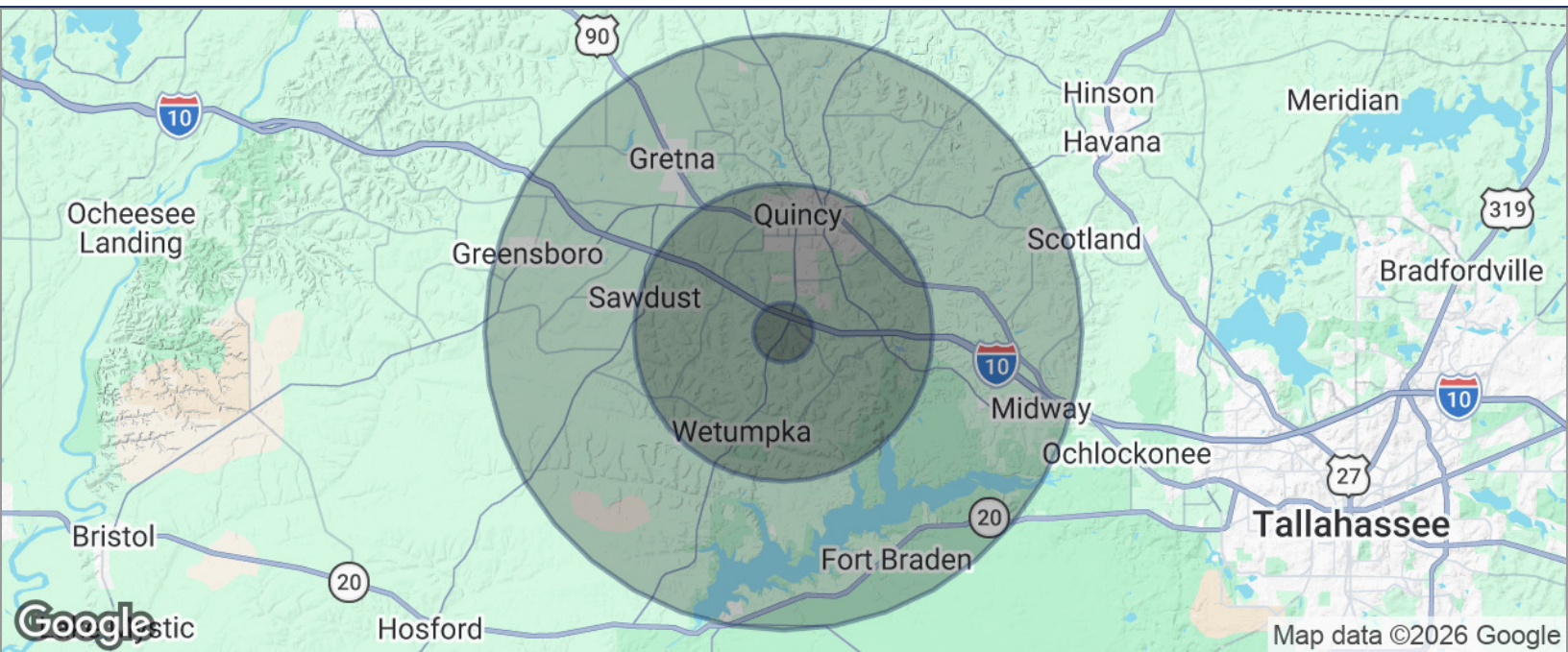
Clark Smith
 850.510.6333
 csmith@tlgproperty.com

TLG REAL ESTATE SERVICES
 3520 Thomasville Road, Suite 200, Tallahassee, FL 32309
 850.385.6363





DEMOGRAPHICS MAP
PAT THOMAS PKWY AND I-10
 QUINCY, FL 32351



POPULATION	1 MILE	5 MILES	10 MILES
TOTAL POPULATION	692	13,335	27,419
MEDIAN AGE	32.0	32.7	35.2
MEDIAN AGE (MALE)	31.0	31.9	34.9
MEDIAN AGE (FEMALE)	32.3	33.0	35.0
HOUSEHOLDS & INCOME	1 MILE	5 MILES	10 MILES
TOTAL HOUSEHOLDS	214	4,205	9,275
# OF PERSONS PER HH	3.2	3.2	3.0
AVERAGE HH INCOME	\$32,955	\$34,814	\$41,433
AVERAGE HOUSE VALUE	\$105,333	\$118,143	\$136,795

* Demographic data derived from 2020 ACS - US Census

Clark Smith
 850.510.6333
 csmith@tlgproperty.com

TLG REAL ESTATE SERVICES
 3520 Thomasville Road, Suite 200, Tallahassee, FL 32309
 850.385.6363

