

Broken Arrow Ranch

3182 Indian Ridge Pl, Lakeland, Florida 33810

David Hitchcock, ALC
863-557-0082
davidh@saundersrealestate.com

Nick Dabbelt
937-903-1489
nick@saundersrealestate.com

PROPERTY OVERVIEW



Sale Price

\$2,795,000

Offering Summary

Acreage:	60.41 Acres
Price / Acre:	\$46,267
State:	Florida
City:	Lakeland
County:	Polk
Property Type:	Ranches and Pastureland, Acreage and Estates, Equestrian, Hunting and Recreational Land
Video:	View Here

Property Overview

Introducing Broken Arrow Ranch—a rare opportunity to own an exceptional ranch property in North Lakeland featuring 60 acres of pristine pasture, recreational land, and two natural springs.

The primary residence spans 2,736± square feet and offers 3 bedrooms and 2 full bathrooms. Recent upgrades include a beautifully renovated kitchen and primary bathroom, saltwater pool with hot tub, and both front and back screened porches. Additional features include reinforced covered parking, a “she-shed,” and a whole-house generator supported by 700 gallons of propane storage—capable of powering the home for multiple weeks in the event of a long-term power outage.

The property also includes a 2019 manufactured home, ideal as a guest residence or income-producing rental. This home offers 2,002 ± square feet, 3 bedrooms, 2 bathrooms, covered parking, a back deck, and children’s playset. The primary bathroom features dual vanities, a soaking tub, and a walk-in shower.

An additional single-wide manufactured home provides flexibility as an office or guest house, featuring a recently renovated interior and a new A/C unit. Other improvements include: a large equipment barn, diesel fueling station with two 500-gallon tanks, multiple covered parking areas, storage sheds, and an open stable.

With RL-1 and RL-2 Zoning/Future Land Use classifications, the property holds attractive potential for future residential development, making it an excellent candidate for both current enjoyment and long-term investment.

Broken Arrow Ranch combines comfort, functionality, and rural lifestyle appeal—perfect for recreation, livestock, or country living with income potential.

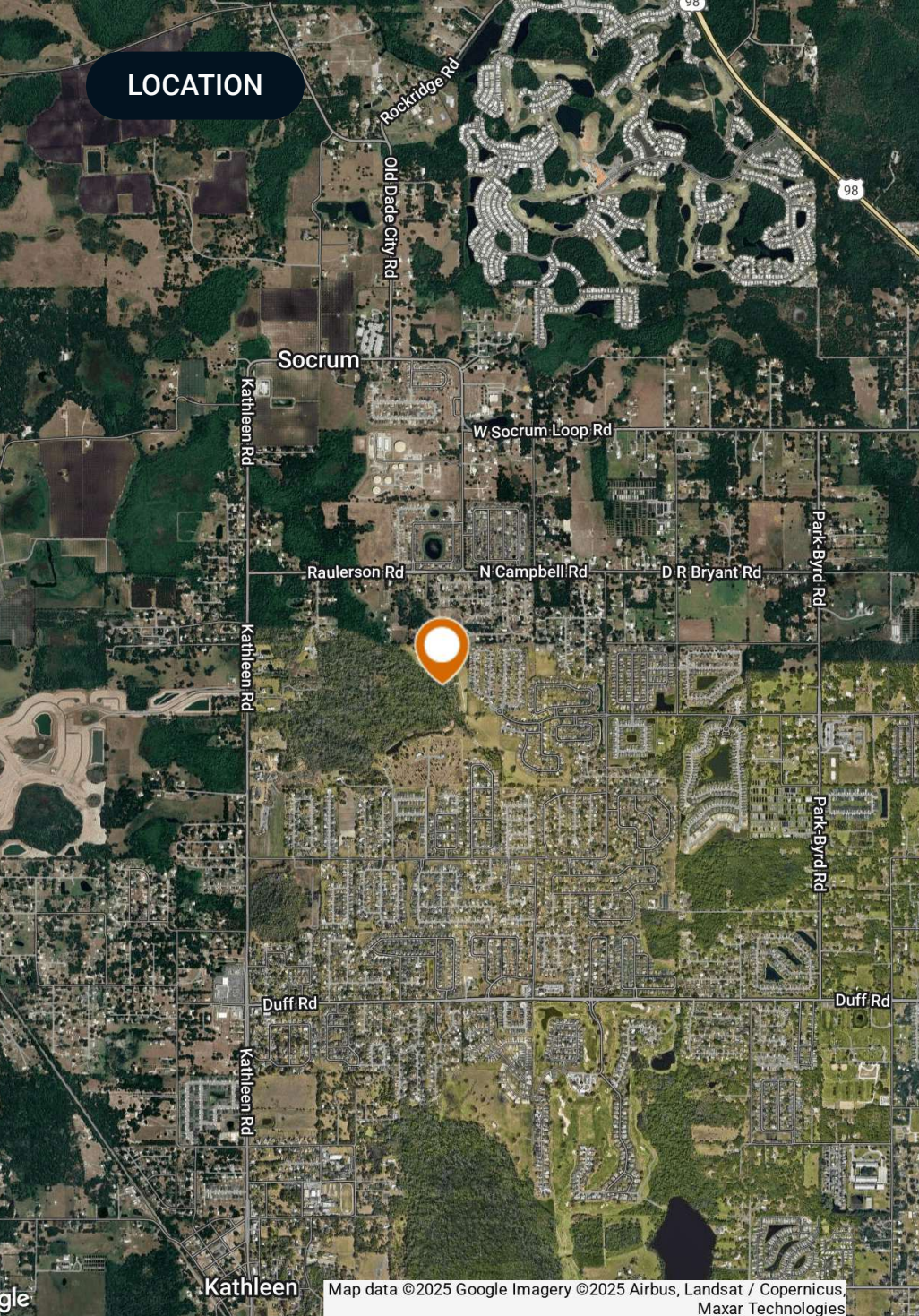
SPECIFICATIONS & FEATURES



Specifications & Features

Uplands / Wetlands:	36.07/24.34
Soil Types:	<ul style="list-style-type: none">• Sparr Sand• Hontoon Muck• Apopka Fine Sand• Kendrick Fine Sand
Taxes & Tax Year:	\$5,213 / 2024
Zoning / FLU:	RL-1 and RL-2
Lake Frontage / Water Features:	Two Natural Springs on Property
Water Source & Utilities:	Well, Septic Tank, Electricity and Propane
Fencing:	Yes
Grass Types:	Bahia

LOCATION



Location & Driving Directions

Parcel: 232709000000012020

GPS: 28.1533278, -82.01216079999999

Driving Directions: Contact Nick Dabbelt

Showing Instructions: Contact Nick Dabbelt

Map data ©2025 Google Imagery ©2025 Airbus, Landsat / Copernicus, Maxar Technologies

PRIMARY RESIDENCE



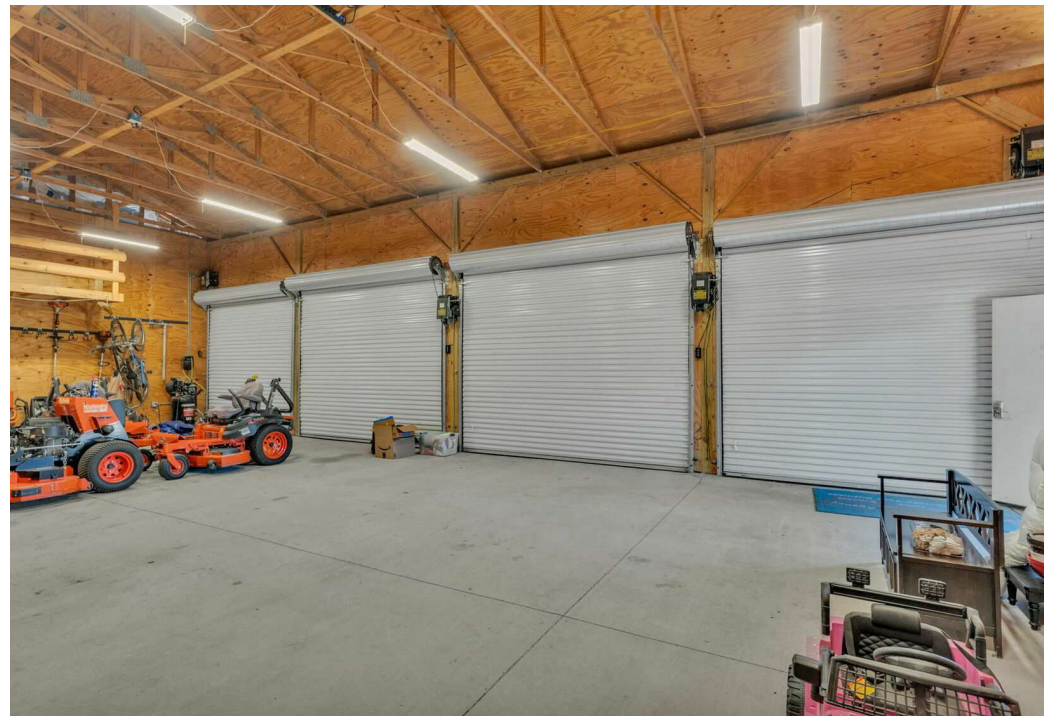
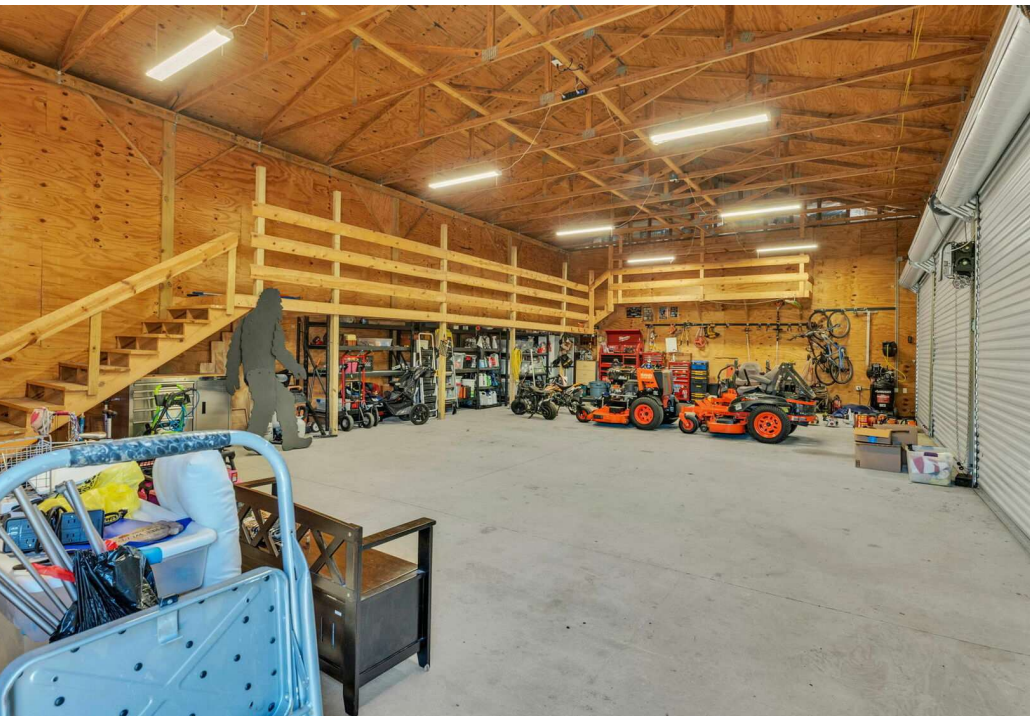
GUEST HOUSE



OFFICE



EQUIPMENT BARN



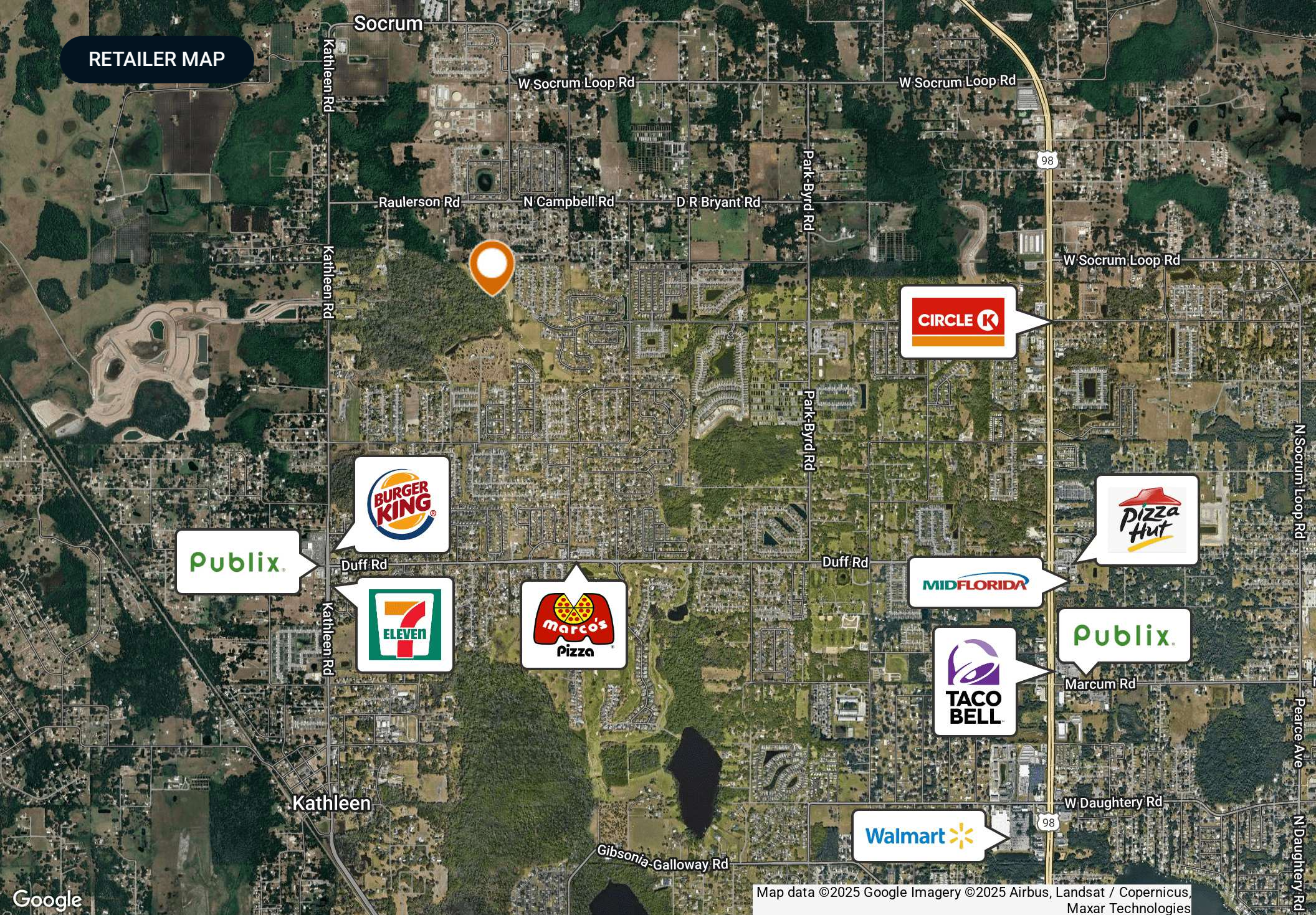
IMPROVEMENTS



ADDITIONAL PHOTOS



RETAILER MAP

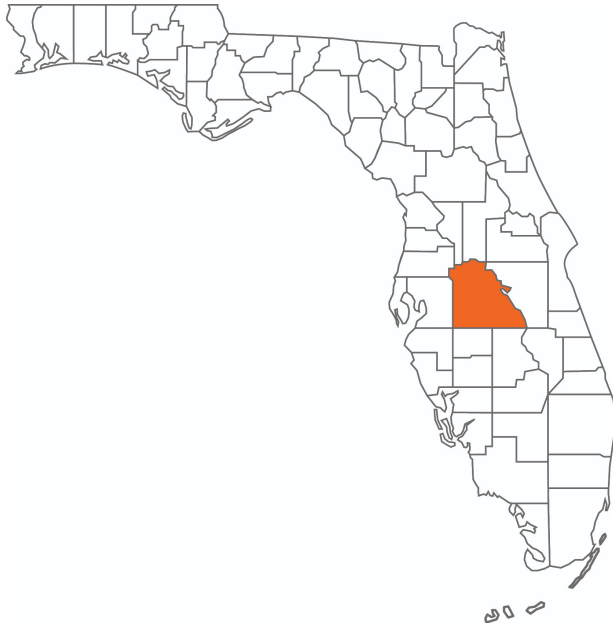


Map data ©2025 Google Imagery ©2025 Airbus, Landsat / Copernicus, Maxar Technologies

COUNTY



Polk County FLORIDA

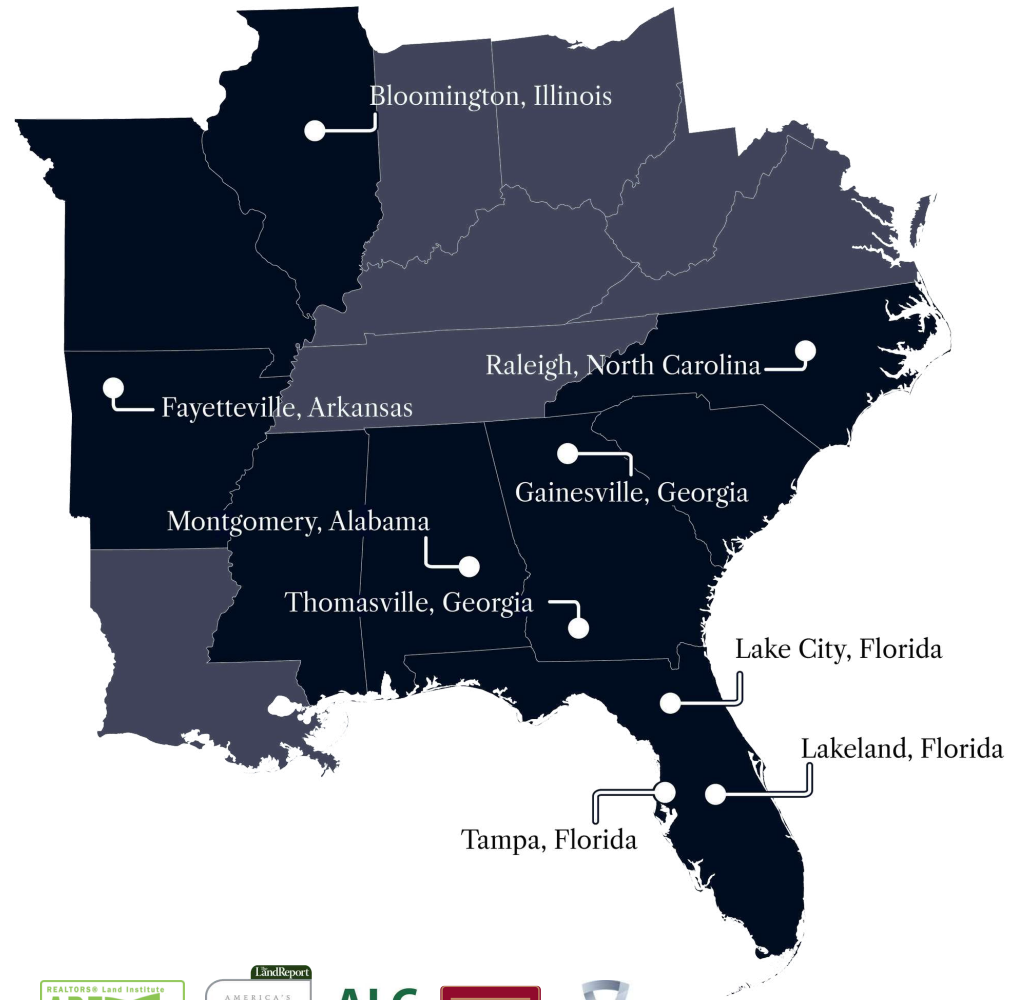


Founded	1861	Density	386.5 (2019)
County Seat	Bartow	Population	775,084 (2023)
Area	1,875 sq. mi.	Website	polk-county.net

In Florida, Polk County is a leading contributor to the state's economy and politics. Concerning the local economy, industries like citrus, cattle, agriculture, and phosphate have all played extremely vital roles in Polk County. An increase in tourist revenue has also significantly contributed to the county's economic growth in recent years. As the heart of Central Florida, Polk County's location between the Tampa and Orlando Metropolitan Areas has aided in the development and growth of the area. Residents and visitors alike are drawn to the unique character of the county's numerous heritage sites, cultural venues, stunning natural landscapes, and plentiful outdoor activities.



At Saunders Real Estate, we deliver full-service real estate solutions, built on more than 30 years of trusted experience. Our dedicated teams offer tailored guidance backed by deep regional insight and a proven track record. We believe that successful outcomes start with strong relationships built on trust and a shared commitment to your goals.



877-518-5263 • info@saundersrealestate.com



©2026 Saunders Real Estate, LLC. All rights reserved. The information contained in this communication is strictly confidential. This information has been obtained from sources believed to be reliable but has not been verified. NO WARRANTY OR REPRESENTATION, EXPRESS OR IMPLIED, IS MADE AS TO THE CONDITION OF THE PROPERTY (OR PROPERTIES) REFERENCED HEREIN OR AS TO THE ACCURACY OR COMPLETENESS OF THE INFORMATION CONTAINED HEREIN, AND SAME IS SUBMITTED SUBJECT TO ERRORS, OMISSIONS, CHANGE OF PRICE, RENTAL OR OTHER CONDITIONS, WITHDRAWAL WITHOUT NOTICE, AND TO ANY SPECIAL LISTING CONDITIONS IMPOSED BY THE PROPERTY OWNER(S). ANY PROJECTIONS, OPINIONS OR ESTIMATES ARE SUBJECT TO UNCERTAINTY AND DO NOT SIGNIFY CURRENT OR FUTURE PROPERTY PERFORMANCE.