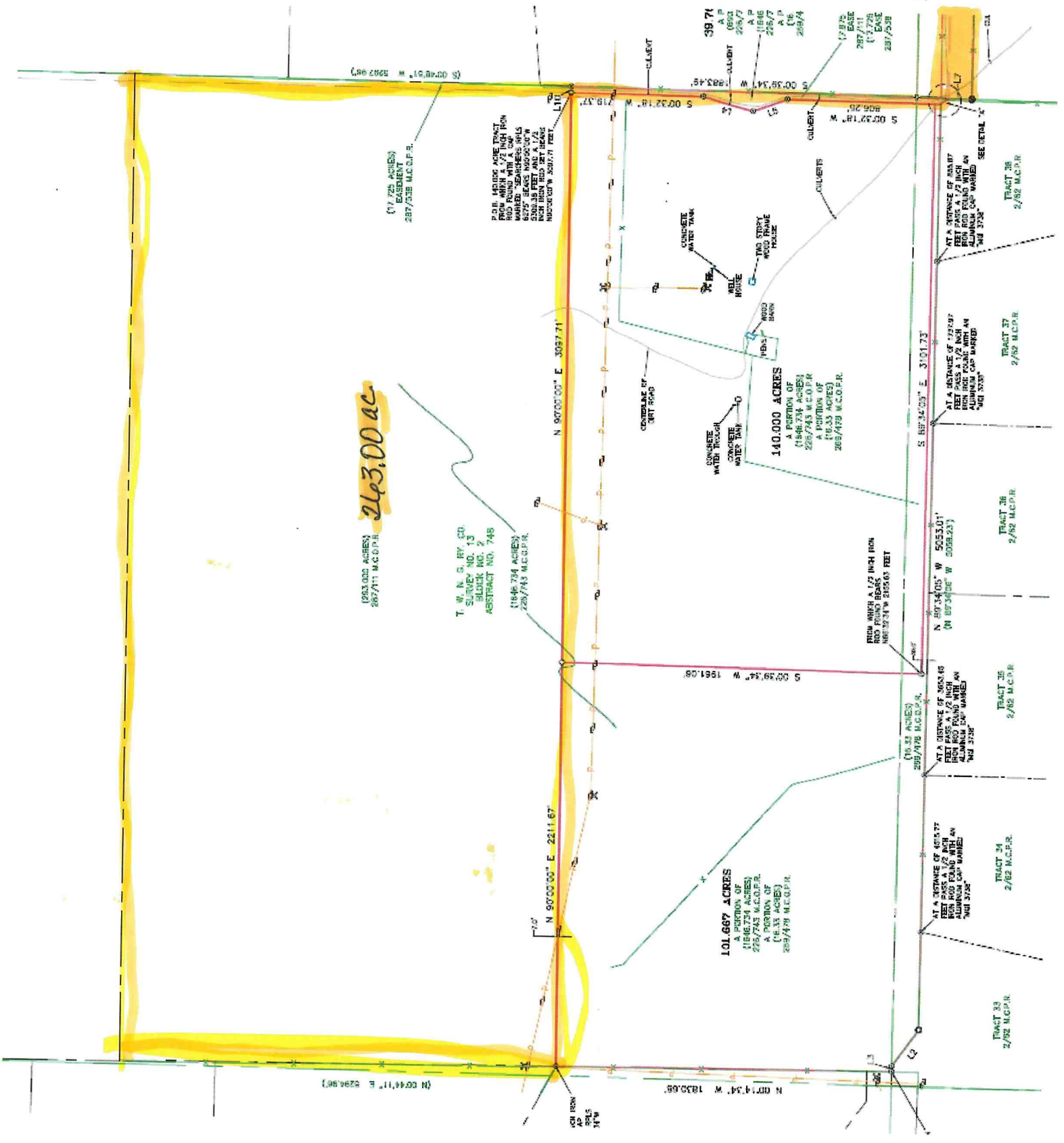


See
2nd
Survey



1933.000 ACRES
267/711 M.C.D.P.R.
243.00 ac

(17.725 ACRES)
EASEMENT
287/238 M.C.D.P.R.

T. W. N. S. RY. CO.
SERIES NO. 13
SPLIT NO. 2
ABSTRACT NO. 748

1186.734 ACRES
228/743 M.C.D.P.R.

101.667 ACRES
A PORTION OF
(1186.734 ACRES)
228/743 M.C.D.P.R.
A PORTION OF
(16.33 ACRES)
289/479 M.C.D.P.R.

140.000 ACRES
A PORTION OF
(1186.734 ACRES)
228/743 M.C.D.P.R.
A PORTION OF
(16.33 ACRES)
289/479 M.C.D.P.R.

AT A DISTANCE OF 105.77
FEET FROM THE 1/2 INCH IRON
ROD FOUND WITH AN
ALUMINUM CAP MARKED
"NO 3738"

AT A DISTANCE OF 300.48
FEET FROM THE 1/2 INCH
IRON ROD FOUND WITH AN
ALUMINUM CAP MARKED
"NO 3738"

N 89°34'05" W 505.501'
(N 89°34'06" W 508.23)

AT A DISTANCE OF 127.97
FEET FROM THE 1/2 INCH
IRON ROD FOUND WITH AN
ALUMINUM CAP MARKED
"NO 3738"

AT A DISTANCE OF 104.87
FEET FROM THE 1/2 INCH
IRON ROD FOUND WITH AN
ALUMINUM CAP MARKED
"NO 3738"

FOR ADDITIONAL POINT
ROD FOUND WITH A CAP
MARKED "SEARCHERS HILLS
228/743 SERIES 1000000 W
N 89°34'05" W 205.605 FEET
N 89°34'05" W 205.605 FEET

CONCRETE
WATER TANK

CONCRETE
WATER TANK

CONCRETE
WATER TANK

CONCRETE
WATER TANK

CONCRETE
WATER TANK

CONCRETE
WATER TANK

CONCRETE
WATER TANK

CONCRETE
WATER TANK

CONCRETE
WATER TANK

CONCRETE
WATER TANK

CONCRETE
WATER TANK

CONCRETE
WATER TANK

CONCRETE
WATER TANK

CONCRETE
WATER TANK

TRACT 33
2/82 M.C.P.R.

TRACT 34
2/82 M.C.P.R.

TRACT 35
2/82 M.C.P.R.

TRACT 36
2/82 M.C.P.R.

TRACT 37
2/82 M.C.P.R.

TRACT 38
2/82 M.C.P.R.

1/2 INCH
IRON
ROD
14" W

N 07°14'34" W 1833.05'

N 90°00'00" E 2211.67'

S 02°39'34" W 1981.08'

(16.33 ACRES)
289/478 M.C.D.P.R.

N 89°34'05" W 505.501'
(N 89°34'06" W 508.23)

S 89°34'05" E 3101.73'

N 90°00'00" E 3097.71'

CONTROL OF
DIRT ROAD

CONCRETE
WATER TANK

CONCRETE
WATER TANK

CONCRETE
WATER TANK

CONCRETE
WATER TANK

CONCRETE
WATER TANK

CONCRETE
WATER TANK

CONCRETE
WATER TANK

CONCRETE
WATER TANK

CONCRETE
WATER TANK

CONCRETE
WATER TANK

CONCRETE
WATER TANK

CONCRETE
WATER TANK

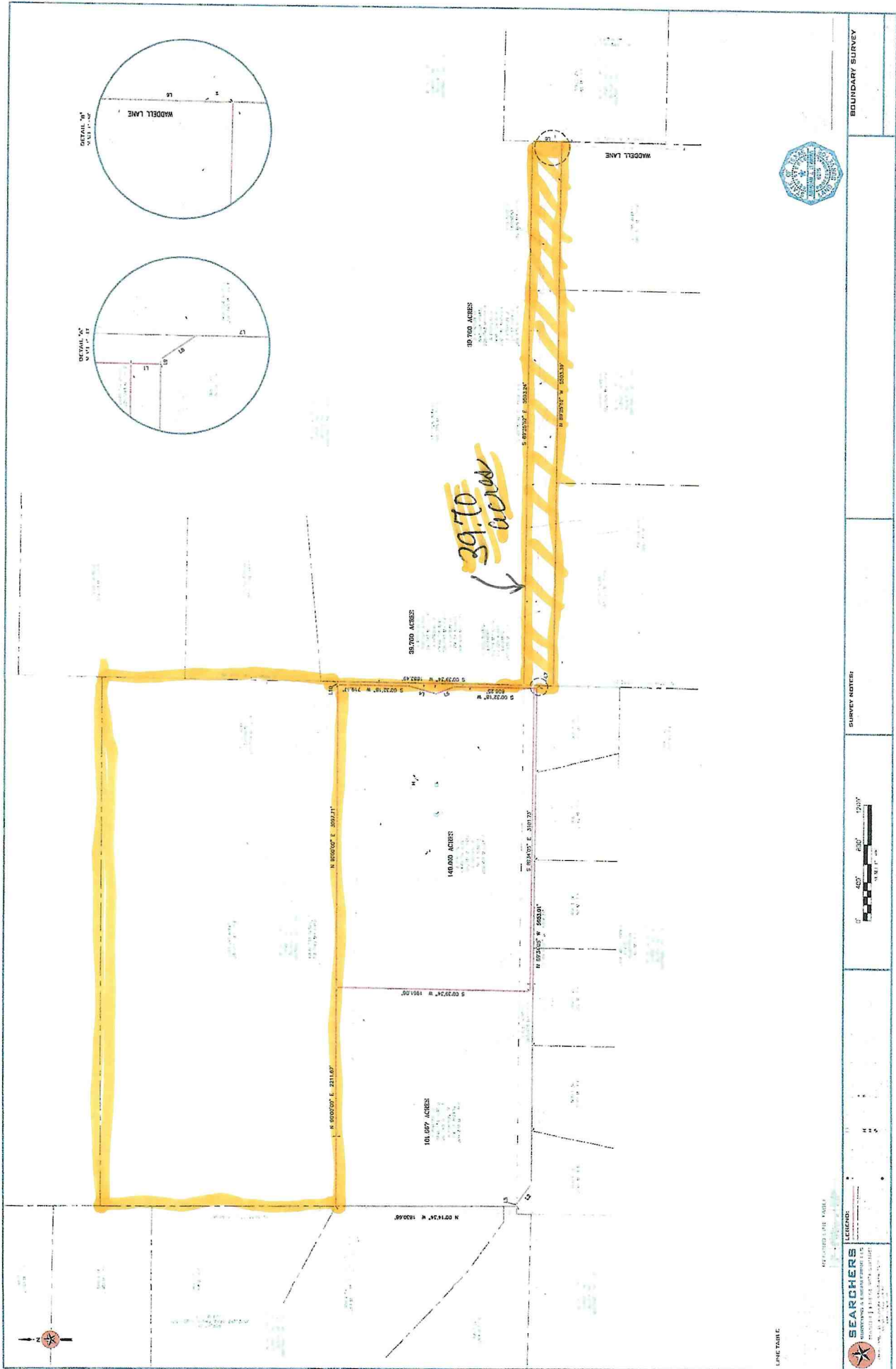
CONCRETE
WATER TANK

39.71'
A.P.
CALIBRE
288/7
1186
228/7
A.P.
1186
228/7
A.P.
1186
228/7
A.P.
1186
228/7
A.P.
1186
228/7

178.72'
BASE
287/738
177.72'
BASE
287/238

(N 07°44'17" E 5294.96')

(S 07°49'51" W 5292.93')



BOUNDARY SURVEY

SURVEY ACRES



LEGEND:

SEARCHERS
 REAL ESTATE SURVEYORS
 STATE OF TEXAS

LINE TABLE